

2022 Weekly Alaska Salmon Harvest Update #9

Harvest Through Statistical Week 32 (8/6/2022)

(Thousand Fish)

	Sockeye			Pink			Keta			Coho			Chinook		
	YTD 2021	YTD 2022	YoY	YTD 2020	YTD 2022	YoY	YTD 2021	YTD 2022	YoY	YTD 2021	YTD 2022	YoY	YTD 2021*	YTD 2022*	YoY
AYK	-	-	-	5	84	-	39	221	467%	1	2	100%	-	-	-
Kodiak	2,332	1,673	-28%	10,552	6,088	-42%	327	449	37%	49	15	-69%	7	6	-14%
Chignik	1	84	-	-	27	-	13	8	-38%	-	1	-	-	-	-
Alaska Peninsula	7,021	7,857	12%	3,402	2,485	-27%	2,142	720	-66%	124	24	-81%	10	11	10%
Bristol Bay	41,912	59,792	43%	51	79	55%	157	418	166%	18	5	-72%	4	5	25%
Cook Inlet	1,586	1,268	-20%	1,829	252	-86%	82	123	50%	108	76	-30%	-	-	-
Prince William Sound	1,144	1,546	35%	15,334	24,974	63%	2,105	2,675	27%	3	2	-33%	8	10	25%
Southeast	553	549	-1%	5,376	6,650	24%	3,134	3,551	13%	640	344	-46%	123	145	18%
Statewide	54,993	72,775	32%	37,055	40,639	10%	8,255	8,166	-1%	1,061	475	-55%	182	180	-1%

Note: Data is subject to revision. Regional totals do not sum to statewide total due to data suppression for confidentiality. *Chinook figures exclude harvest before week 20.

Source: Alaska Department of Fish & Game.

The pace of Alaska salmon harvests slowed for a second consecutive week during statistical week 32, which ended Aug. 6. But the number of fish caught is more than 20% larger than the year-to-date 2021 harvest (2020 for pinks) because of the large harvest volume earlier in the season.

Overall pink salmon harvests are up 10% over 2020 due to relatively strong pink salmon harvests in Prince William Sound and Southeast Alaska. However, small pink salmon harvests in Kodiak, the Alaska Peninsula, and Cook Inlet continue to bring down statewide harvest totals. These regions are down 42%, 27%, and 86% respectively from year-to-date 2020, the previous even-numbered year (even and odd year pinks are distinct populations).

The keta salmon harvest showed signs of recovering in data made available last week, after trailing behind past-season benchmarks for most of this season. This is because of last week's harvest and because of upward revision of harvests from previous weeks. The keta harvest to date is now on par with year-to-date 2021 although it remains 34% below the five-year average keta harvest to-date.

2022 Harvest v. Projection

(Thousand Fish)

	Harvest	Projection	% Realized
Sockeye	72,775	74,012	98%
Pink	40,639	67,225	60%
Keta	8,166	15,417	53%
Coho	475	3,588	13%
Chinook	180	310	58%
Total	122,235	160,552	76%



Alaska Seafood Marketing Institute

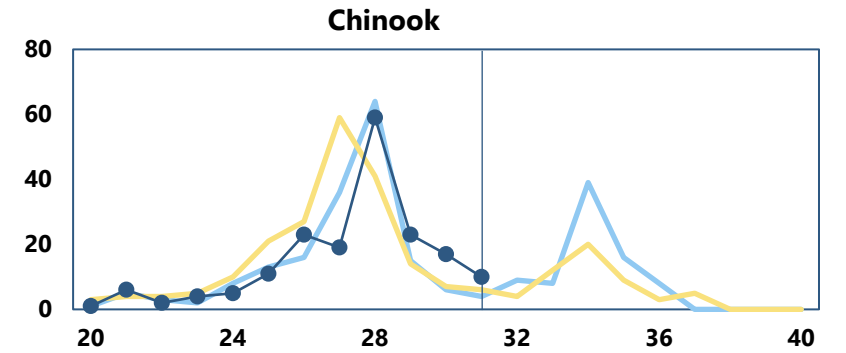
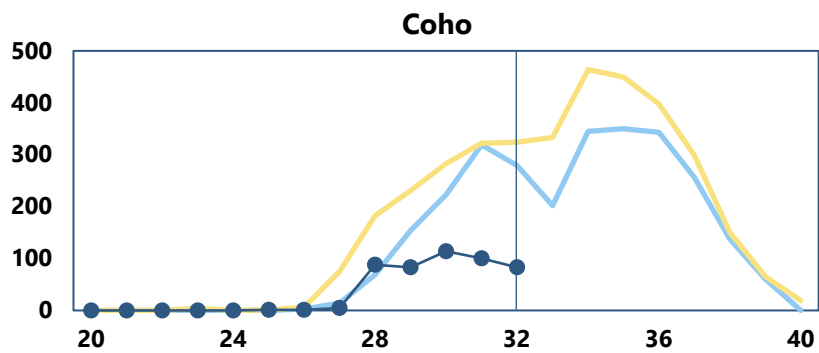
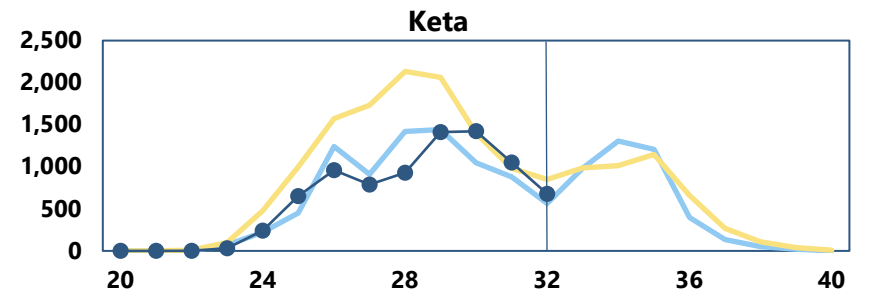
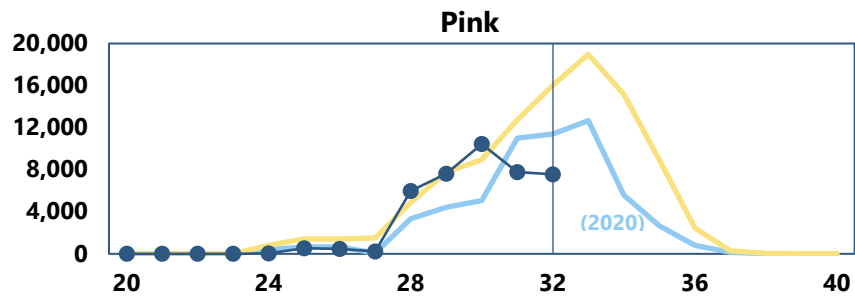
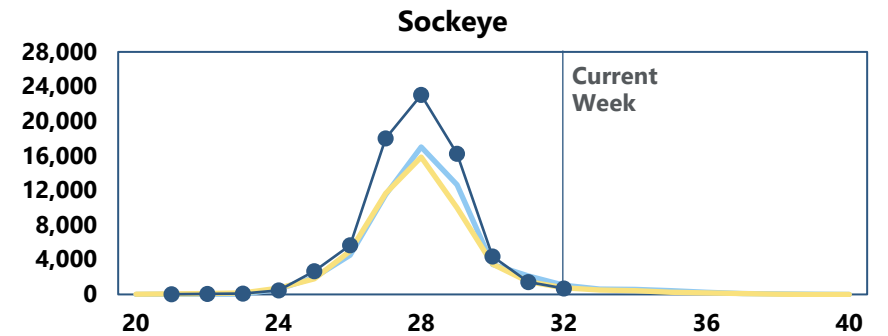
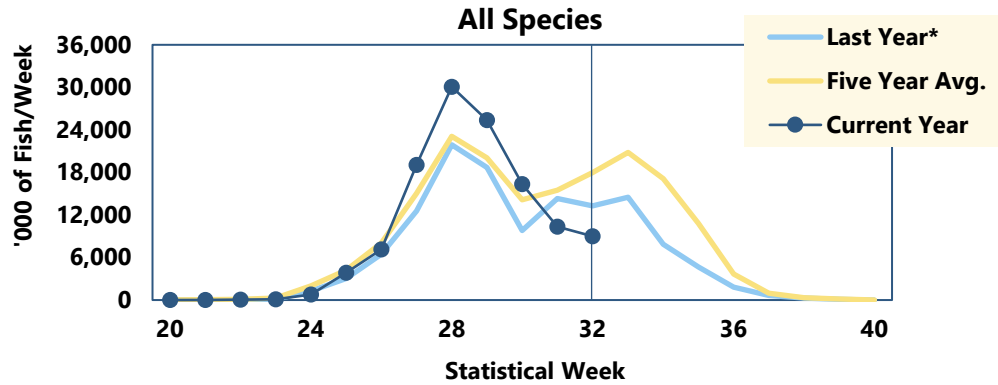


Formerly McDowell Group

More Alaska Seafood resources (click for link): alaskaseafood.org

Salmon Harvest by Statistical Week, 2022

(Thousands of Fish per Week)



*Last year uses 2020 pink salmon instead of 2021 (most recent even-year).

Source: Alaska Department of Fish & Game.

Statistical Week	19-22	23-27	28-31	32-35	36-40
Approximate Mth.	May	June	July	August	Sept.