

2022 Weekly Alaska Salmon Harvest Update #11

Harvest Through Statistical Week 34 (8/20/2022)

(Thousand Fish)

	Sockeye			Pink			Keta			Coho			Chinook		
	YTD 2021	YTD 2022	YoY	YTD 2020	YTD 2022	YoY	YTD 2021	YTD 2022	YoY	YTD 2021	YTD 2022	YoY	YTD 2021*	YTD 2022*	YoY
AYK	-	-	-	5	84	-	76	425	459%	5	8	60%	-	-	-
Kodiak	2,774	1,969	-29%	19,342	13,557	-30%	387	526	36%	104	43	-59%	7	7	0%
Chignik	27	84	-	-	27	-	20	8	-60%	34	1	-97%	-	-	-
Alaska Peninsula	7,304	7,970	9%	4,766	5,619	18%	2,179	803	-63%	203	41	-80%	12	12	0%
Bristol Bay	41,974	59,973	43%	61	99	62%	158	422	167%	27	10	-63%	4	5	25%
Cook Inlet	1,659	1,283	-23%	2,503	378	-85%	87	132	52%	132	88	-33%	-	-	-
Prince William Sound	1,156	1,555	35%	16,125	26,574	65%	2,113	2,779	32%	24	7	-71%	8	10	25%
Southeast	866	992	15%	7,060	13,930	97%	4,850	5,827	20%	853	551	-35%	170	179	5%
Statewide	56,197	73,831	31%	55,316	60,272	9%	10,544	10,927	4%	1,608	756	-53%	229	222	-3%

Note: Data is subject to revision. Regional totals do not sum to statewide total due to data suppression for confidentiality. *Chinook figures exclude harvest before week 20.

Source: Alaska Department of Fish & Game.

Alaska's salmon harvests inched above the year-to-date benchmark in statistical week 34, following a string of three unseasonably slow harvest weeks. The total harvest is now up almost 18% year-to-date from 2021 (2020 for pinks).

Pink salmon harvest numbers are now up 9% from year-to-date 2020. Pink harvests were particularly strong last week in the Alaska Peninsula, where the harvest of 5.6 million pink salmon is up 18% from 2020. Also, the pink salmon harvest of 13.9 million in Southeast is almost double the pink salmon catch-to-date in 2020, although still low by historical standards. Pink salmon harvests are compared to 2020 instead of 2021 because of the species' distinct two-year lifecycle.

Most of the strength of Alaska's salmon harvests this year came from sockeye salmon earlier in the summer. The sockeye harvest (which is winding down) is up 31% from 2021. The sockeye harvest is nearly 100% of the ADF&G forecast for the season.

The coho salmon season is typically later in summer. This year's harvest is later than usual. The coho harvest of 756,000 is down 53% from 2021 year-to-date. But there is still time in the season for more coho to arrive.

2022 Harvest v. Projection

(Thousand Fish)

	Harvest	Projection	% Realized
Sockeye	73,831	74,012	100%
Pink	60,272	67,225	90%
Keta	10,927	15,417	71%
Coho	756	3,588	21%
Chinook	222	310	72%
Total	146,008	160,552	91%



Alaska Seafood Marketing Institute

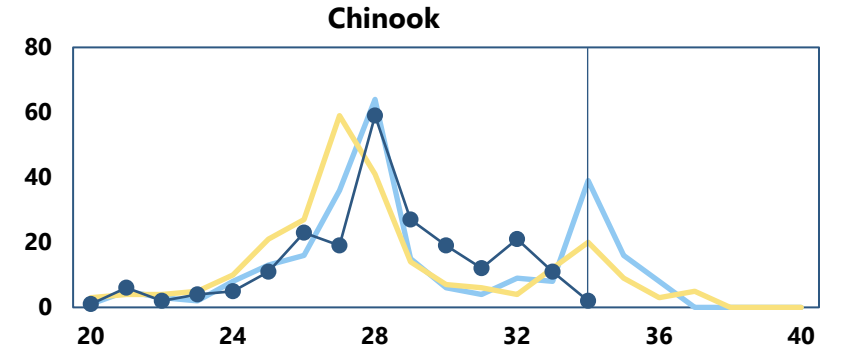
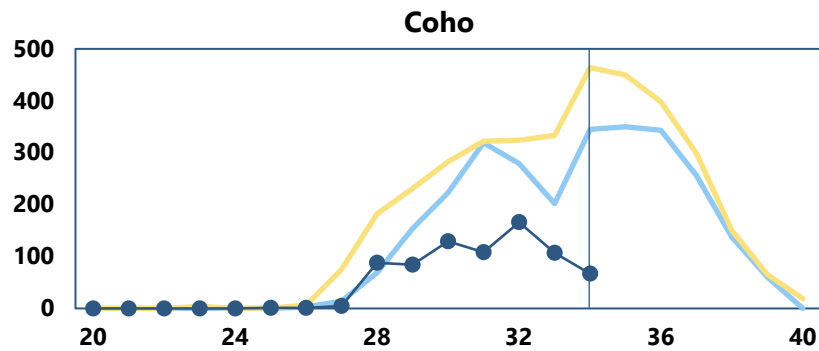
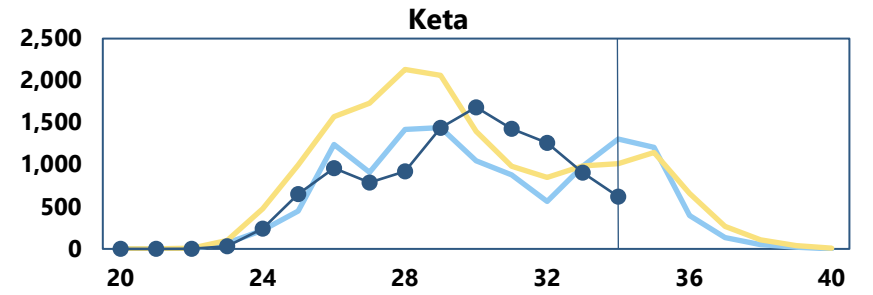
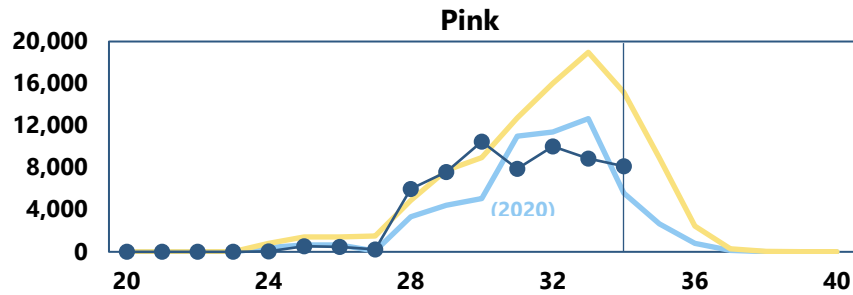
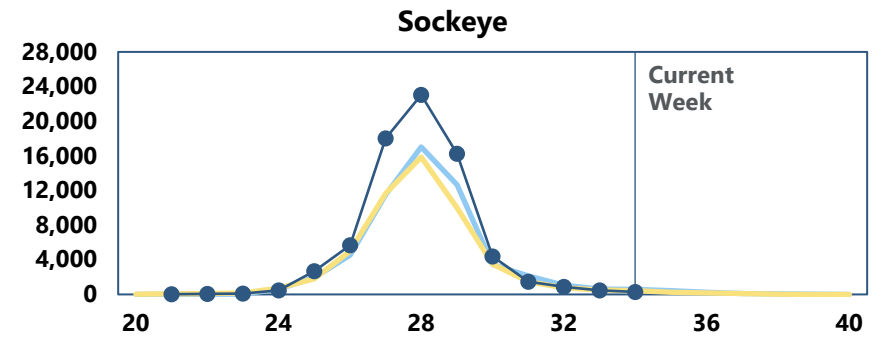
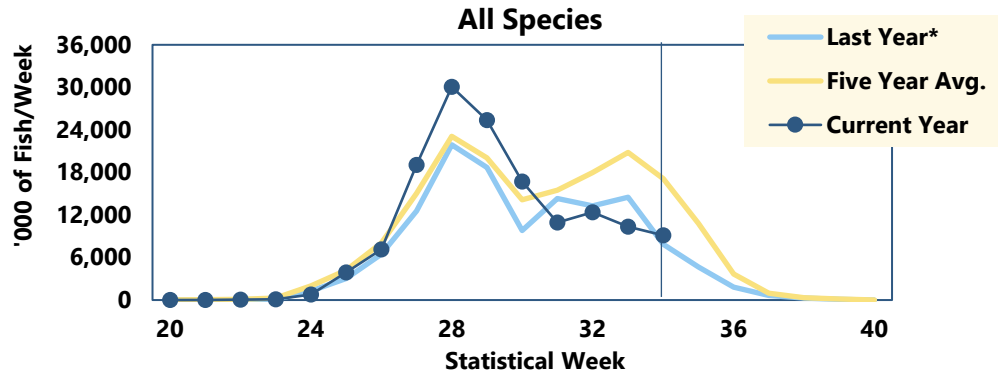


Formerly McDowell Group

More Alaska Seafood resources (click for link): alaskaseafood.org

Salmon Harvest by Statistical Week, 2022

(Thousands of Fish per Week)



*Last year uses 2020 pink salmon instead of 2021 (most recent even-year).

Source: Alaska Department of Fish & Game.

Statistical Week	19-22	23-27	28-31	32-35	36-40
Approximate Mth.	May	June	July	August	Sept.