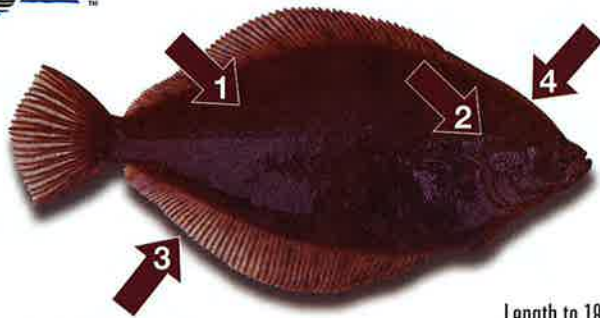


CHARACTERISTICS OF COMMON FLATFISHES

FOUND IN THE NORTHERN GULF OF ALASKA AND BERING SEA



Length to 18 inches (46cm)

BUTTER SOLE

Pleuronectus isolepis (formerly *Isopsetta isolepis*)
Bellingham sole, Scalyfin sole, Skidgate sole

- 1 rough scales on head, body and fins
- 2 low arch in lateral line over pectoral fin
- 3 dorsal and anal fins edged with yellow
- 4 moderately long accessory dorsal branch



Length to 18 inches (46cm)

YELLOWFIN SOLE

Pleuronectes asper (formerly *Limanda aspera*)
Alaska dab, Muddab, Northern sole

- 1 high arch with flat top in lateral line
- 2 caudal fin rounded at edges
- 3 anal spine exposed
- 4 narrow black line at base of dorsal and anal fins



Length to 22 inches (56cm)

ENGLISH SOLE

Pleuronectes vetulus (formerly *Parophrys vetulus*)
California sole, Lemon sole, Pointed-nose sole

- 1 slight curve in lateral line over pectoral fin
- 2 slender, pointed head
- 3 long accessory dorsal branch
- 4 strong anal spine

CHARACTERISTICS OF COMMON FLATFISHES

FOUND IN THE NORTHERN GULF OF ALASKA AND BERING SEA



Length to 105 inches (267cm)

PACIFIC HALIBUT

Hippoglossus stenolepis
Northern halibut, Right halibut

- 1 body large and thick
- 2 large conical teeth on both jaws; 2 rows on upper jaw
- 3 high arch in lateral line
- 4 crescent-shaped caudal fin, often indented near edge

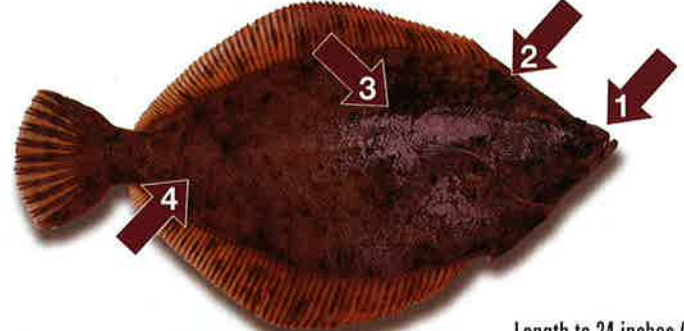


Length to 22 inches (56cm)

FLATHEAD SOLE

Hippoglossoides elassodon
Cigarette paper sole, Paper sole

- 1 lateral line w/flattened arch over pectoral fin
- 2 small pores below and behind lower eye
- 3 strong exposed anal spine
- 4 one row of teeth on both sides of both jaws



Length to 24 inches (61cm)

ROCK SOLE

Pleuronectes bilineatus (formerly *Lepidopsetta bilineata*)
Broadfin sole, Roughscale sole, Two-lined flounder

- 1 small mouth w/fleshy lips
- 2 short accessory dorsal branch
- 3 high arch in lateral line
- 4 rough scales on eye side

CHARACTERISTICS OF COMMON FLATFISHES

FOUND IN THE NORTHERN GULF OF ALASKA AND BERING SEA

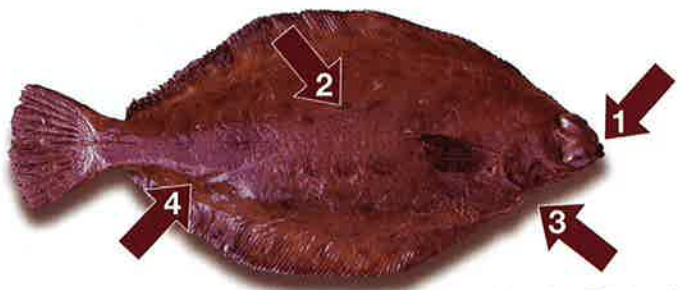


Length to 33 inches (84cm)

ARROWTOOTH FLOUNDER

Atheresthes stomias
Long jaw, French sole, Turbot

- 1 cured preopercle
- 2 left eye on upper margin of head
- 3 lateral line w/curve over pectoral fin
- 4 large mouth with prominent teeth



Length to 28 inches (71cm)

DOVER SOLE

Microstomus pacificus
Shortfinned sole, Slime sole, Slipper sole

- 1 very small mouth
- 2 lateral line nearly straight
- 3 small gill opening
- 4 very slimy



Length to 23 inches (58cm)

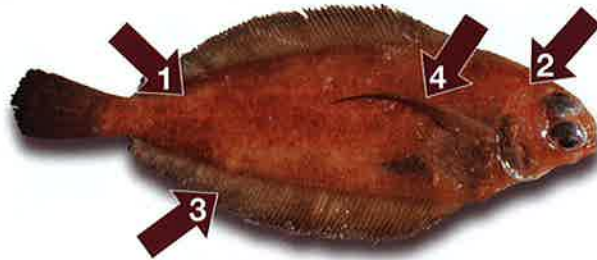
ALASKAN PLAICE

Pleuronectes quadrituberculatus
Lemon sole, Yellow-bellied flounder

- 1 3-7 large, bony protuberances behind upper eye
- 2 moderately broad body
- 3 small branch of lateral lines runs forward on head
- 4 yellow on blind side

CHARACTERISTICS OF COMMON FLATFISHES

FOUND IN THE NORTHERN GULF OF ALASKA AND BERING SEA

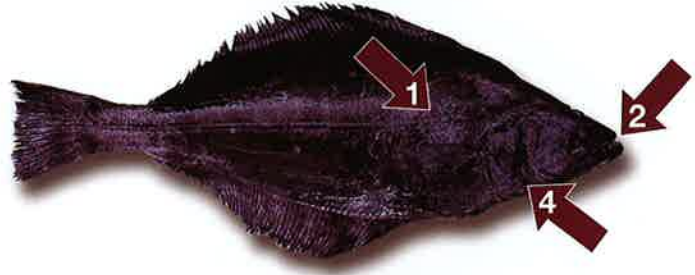


Length to 24 inches (61cm)

REX SOLE

Errex zachirus (formerly *Glyptocephalus zachirus*)
Longfin sole, Witch flounder

- 1 lateral line almost straight
- 2 no accessory dorsal branch
- 3 long, slender flat body
- 4 eyed-side pectoral fin long and mostly black

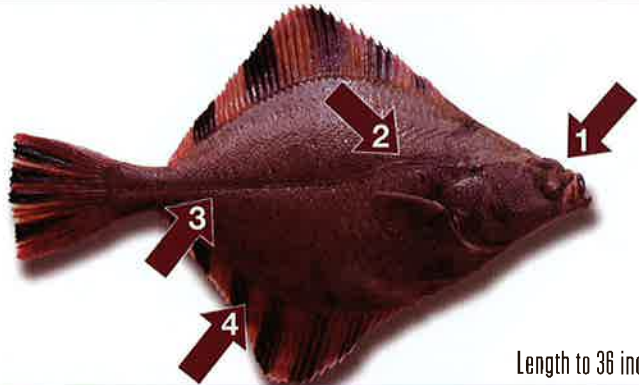


Length to 47 inches (119cm)

GREENLAND TURBOT

Reinhardtius hippoglossoides
Lesser halibut, Newfoundland turbot

- 1 lateral line w/slight slope over pectoral fin
- 2 very large mouth w/strong conical teeth
- 3 dark coloration on blind side
- 4 L-shaped preopercle w/4 or 5 pores near edge around L



Length to 36 inches (91cm)

STARRY FLOUNDER

Platichthys stellatus
Diamond back, Emerywheel, Grindstone

- 1 can be right-eyed or left-eyed
- 2 curve in lateral line over pectoral fin
- 3 rough, star-like scales
- 4 black bars on white to yellow or orange fins